



RECEPTION INFORMATION PACK

LEARNING FOR LIFE

Thank you for visiting

**THE GLOBE
PRIMARY
ACADEMY**

The 
Globe
Primary



Information in this pack

Timeline for admissions

Learning at The Globe / Our values

Our curriculum

Life at The Globe

Reach 2

11 before 11



Headteacher

Mrs Y. Kidd

We take great pride in making sure we give our children a broad and balanced education and help prepare them for life at (and after) primary school.

It is our aim that pupils will be well equipped when they leave to be able to go on to make positive contributions and lead happy lives. We set high expectations for learning, behaviour and respect for each other and this underpins everything we do.

Our talented staff strive to create successful learners, confident individuals and responsible citizens and it is this aim that motivates us every day.

It goes without saying that we strive for the best academic outcomes for our children but we also focus on the whole child, ensuring that our pupils are happy and safe.

ADMISSIONS

In Year admissions If you would like to join our school during the school year you will need to contact the Local Authority as they manage places on behalf of the school. If your child is moving school, we would encourage you to book in a tour. If you want to apply for a place just follow the link below:

<https://www.westsussex.gov.uk/education-children-and-families/schools-and-colleges/school-places/apply/starting-school-places/>

Reception admissions for Academic year September 2025/26 All children will be required to apply for a place in our reception via the Local authority, even if they currently attend Little Acorns Nursery.

<https://www.westsussex.gov.uk/education-children-and-families/schools-and-colleges/school-places/apply/starting-school-places/>



TIMELINE FOR APPLICATIONS

- Monday 7 October 2024 - Starting school and junior school applications open for September 2025.
- Wednesday 15 January 2025 - Closing date for all primary, infant and junior school applications at 11.59pm.
- Wednesday 16 April 2025 - Offer day - on-time online applicants notified which school their child has been offered by email.
- September 2025 - School starts!



Thank you for visiting

THE GLOBE PRIMARY ACADEMY



A SMALL SCHOOL WITH A BIG HEART

We pride ourselves on building strong relationships, which is what makes our school truly special. We're proud of the warm, family-like atmosphere we offer, where children feel happy, confident, and excited to come to school each day. Our engaging curriculum ensures that every child has the chance to thrive, with hands on learning both inside and outside the classroom. Our school values are woven into everything we do, helping our children become not just successful learners but also positive, caring members of the community.

www.theglobeprimary.co.uk



LEARNING AT THE GLOBE



The Vision:

Our pupils will leave school prepared, knowledgeable, confident and motivated for life's journey.

The Values:

Aspiration, Enjoyment, Resilience, Responsibility

The Mission Statement:

Learning for Life

At The Globe Primary Academy, we endeavour to provide all pupils with the best possible education regardless of race, religion, gender or social-economic circumstance. Our aim is to do this by providing a welcoming, safe and enjoyable school where everyone is respected and listened to; a school where we take pride in ourselves and our achievements, enabling children to become aspirational and successful learners. No child should ever be left behind and we recognise the importance of supporting all pupils to achieve their potential.

We aim to create a culture of achievement and positive reinforcement at all levels of ability. All governors are committed to excellence for all; inspiring a new generation of confident learners ready to succeed in the 21st Century.

We want our children to be thoughtful, responsible individuals who are able to contribute to the school and the community and the wider world. We believe they should have a strong sense of self-belief with an "I can do" attitude. They should have an understanding of their rights and responsibilities, and respect for themselves and others. All pupils should have equal opportunities and should be valued for their individuality, culture and heritage in line with our British Values. Children should have the resilience and perseverance to take risks and try new challenges, aspiring to be the best they can be. We aim to be an integral part of our local community working in partnership with our parents and carers, to build a nurturing environment where all pupils feel valued, but not losing our global outlook which is evident in our school. Pupils should be the recipients of truly excellent and inspirational teaching. We are committed to our pupils and to our own learning journey, sharing quality practice and working in partnership with each other.





OUR CURRICULUM

At The Globe Primary Academy we follow the Statutory Early Years Foundation Stage (EYFS) Framework for children aged from birth to five years of age. Our children have spacious, fit-for-purpose classrooms which allows for effective adult-led learning and independent learning through exploration and play to take place. We offer our youngest children a large, well-resourced outdoor learning area and they can access the extensive fields for outdoor PE in warmer weather.

THE GLOBE PRIMARY ACADEMY



OUR UNIFORM

Our school uniform consists of a burgundy jumper / cardigan, grey skirts or trousers and a white polo top. In the summer children can wear yellow check dresses, grey dresses, grey skirts or grey shorts. Our PE kit consists of a burgundy hoodie and black shorts. When your child joins us they will be put into a team. Their PE top will match their PE team - Yellow, Red, Blue or Green. Micropore tape must be worn if new pierced ear studs cannot be removed. Please can you ensure that all of your child's clothing and items brought into school are labelled. This is to make it easier to return to the correct child if found.



SCHOOL READINESS

There are many things you can do as a parent to help your child prepare for school. You can:

Encourage them to feed themselves with a knife, fork and spoon, and to drink from a cup without a lid - try not to worry about spillages, allow your child to help clean it up

Encourage them to dress and undress by themselves - bath time is good for this

Use dressing up clothes in play - it's fun and encourages independence

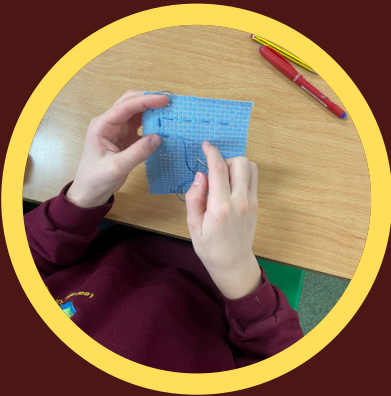
Use lots of praise and encouragement - it makes children feel proud of their achievement

Let them try to do things for themselves - children learn through choosing, trying and doing

Encourage them to make choices - it will give them self-confidence and allow them to learn about the consequences of negative choice

Allow enough time for them to put on their own coat or shoe

Talk to your child - explain, question and read with them as much as you can





HOME - SCHOOL COMMUNICATION

Our friendly staff greet students each morning at classroom doors and are happy to relay messages to the appropriate teachers. If you'd like to schedule a meeting with your child's teacher or a member of the Senior Leadership Team, please get in touch with the school office.

We keep parents informed through regular email updates and a weekly school newsletter sent every Friday, and also share learning on our Facebook and Instagram pages.

We use a user-friendly database system called Arbor to manage student information, contacts, and attendance. This system allows us to communicate with parents via email and allows them to easily update their child's information and contact details. You can even download the Arbor app on your smartphone for convenient access. With the app, parents can register their child for clubs or trips, book slots for parent-teacher meetings, and manage payments, all from their phone.

We provide updates on your child's learning journey through the online app called Class Dojo. You'll receive details about how to access this when your child starts school.

THE GLOBE PRIMARY ACADEMY



Scan to visit our
Facebook page





SCHOOL LUNCHES

WE ARE A NUT FREE SCHOOL AND, NUTS IN ANY FORM, ARE NOT ALLOWED ON THE SCHOOL PREMISES.

All pupils in KS1 – Early Years, Year 1 and Year 2 are eligible for UNIVERSAL FREE school meals. We are appreciative of this government initiative however studies have clearly shown significant benefits for children eating a balanced, nutritious meal in the middle of the school day. These meals can be order via Chartwells.

WRAP AROUND CARE

Join our lively Breakfast Club,! Your child will enjoy a variety of cereals, toast, refreshing fruit juices, and engaging activities to start their day with a smile. Breakfast Club runs every day. Booking is essential and will need to be made along with payment in advance. Sessions are capped and will be taken on a first come, first serve basis. Once all the spaces have been filled, you will not be able to make a booking.

If your child has any specific requirements, please contact the school office prior to booking.

You can find more details on our website for your convenience. We look forward to welcoming your child to our Club!

AFTER SCHOOL CLUBS

We provide a number of after school clubs which are free of charge. Clubs run from 3:15pm-4:00pm.

Clubs can include: Computing club, knitting club, Wild Woods club, choir and Football Club to name a few. These are subject to change in terms of content. Bookings are made on a first come first serve basis. If your child would like to join a club that is full, they will be placed on a waiting list. Children have the chance to sign up to new clubs each term.

BEHAVIOUR

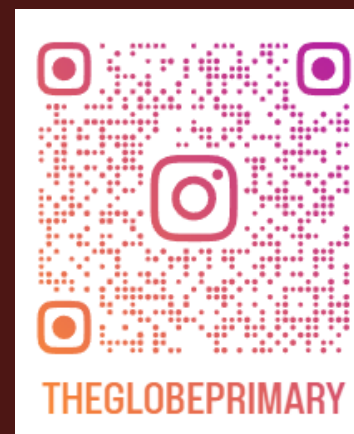
We want our students to embrace our school values, becoming respectful, honest, and polite young individuals who understand both their own rights and the rights of others. You can find our Behaviour Management Policy on our website.

We encourage our students to take responsibility and maintain a high level of self-discipline. We're confident that parents will support us, especially if we need to apply reasonable consequences for misbehaviour or unacceptable conduct. We take swift and decisive action against bullying and vandalism, though these incidents are rare. Your child's well-being is our priority

THE GLOBE PRIMARY ACADEMY



Scan to visit our
Instagram page



ATTENDANCE

At The Globe Primary Academy, we understand the importance of consistent attendance for a successful education, and we firmly believe that our children have the potential to excel.

To ensure that all our children have strong attendance records, the school will employ strategies to address the following situations

- When a child's attendance falls below 96%
- When a child exhibits a pattern of irregular attendance
- When a child is habitually late.

You can find our complete attendance policy on the school's website. We eagerly anticipate collaborating with you to ensure that your child regularly attends school.

Regular attendance, arriving on time each day, lays the foundation for your child's future success.

If your child is unable to attend school for any reason, we greatly appreciate it if you could notify us via the studybugs app. Additionally, if a child has not arrived at school by 9:30 am, we will make a phone call to your home to inquire about their absence.





GOVERNORS

Governors at The Globe Primary Academy keep our school vision at the heart of all they do, including setting the school's policies and our School Development Plan. Our Governing Body consists of staff and volunteers who collectively help to oversee the strategic direction and management of our school. Governing a school means giving much time, energy and enthusiasm in supporting our school and helping us to shape the stimulating environment it is today.

PUPIL PREMIUM

Pupil premium is additional funding given to school for extra support and to help close the attainment gap between disadvantaged and non-disadvantaged pupils. Please read the information within the Pupil Premium Strategy on our website which gives details of our Pupil Premium Grant and how we allocate the funding. The Pupil Premium Grant is a sum of money that is allocated to school to ensure that all children have an equal chance to succeed. Your child may qualify for Pupil Premium. If you qualify, your child will receive Free School Meals.

THE GLOBE PRIMARY ACADEMY



Scan to visit our
website



ACCIDENTS

All staff have had First Aid training. Children often have minor falls in the playground, resulting in cuts and grazes. These are cleaned with water and an antiseptic wipe. A plaster is provided when necessary.

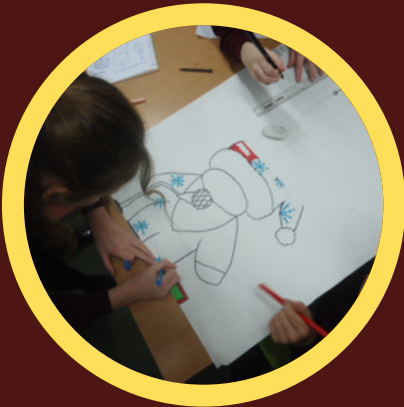
If a child receives a bang on the head, a cold pack is applied, and we inform parents/ carers by a phone call home and a follow up letter detailing what has happened.

If there is a more serious injury, we will try to contact parents/carers so that the child can be taken for medical treatment.

If we cannot make contact, we will take the appropriate action. It is important that we have correct contact telephone numbers for both parents/carers and another person who we could contact, in case of an emergency.

If your child has a prescription that requires administering at school the best option would be for you to come into school to administer the dose yourself. If you are unable to do this, you would be required to sign and date instructions before the school could take responsibility for administering prescription medicines and/or over-the-counter medicines i.e. cough mixtures and anti-histamines.

Children with asthma, who use inhalers, should be trained in their use and be able to use them independently as early as possible. If a child is not able to be independent, the inhaler should be given to the class teacher with clear and precise written instructions. The inhalers are kept in the classroom so that children have immediate access to them. The inhalers are taken to the hall or outside when the children are having PE lessons. It is the parent's responsibility to ensure that the expiry date has not been reached and to replace inhalers as necessary.



WE ARE PROUD TO BE A REACH 2 SCHOOL



REACH2 is primary only academy trust that is characterised by schools that are remarkable places, with remarkable people and remarkable learning.

By always aiming higher the Trust makes sure that every one of its schools sets the highest aspirations for children and makes an exceptional contribution to the community it serves.

Strong family values are a key component of the REACH2 vision. We believe that REACH2 is a family: connected by a common desire to learn from each other, share experiences and be mutually supportive across the entire academy community. Every school and every individual is included in this vision. We actively encourage collaboration – and work as a team to create and deliver the best possible educational experiences for every pupil within the REACH2 Trust, always aiming higher.



11 BEFORE 11

The Globe Primary Academy's curriculum will include opportunities for all children who enter the school in Reception to experience REAch2's 11 exceptional experiences as part of its 11 before 11 promise. 11 before 11 is a set of promises that help our children to be in the driving seat in their own lives. They are a series of seminal experiences that we want every child in the REAch2 family to have experienced before they leave us to go to secondary school-aged 11. Across every one of our academies, we are ambitious for our children to have broad horizons in life and high aspirations for themselves. We want our children to be inspired and challenged so that each one can develop their unique potential to the full.



GET IN TOUCH

The Globe Primary Academy
Irene Avenue
Lancing
West Sussex
BN15 9NZ

01903 854970

office@theglobeprimary.co.uk



Headteacher

Mrs Y. Kidd

CONTACT INFORMATION

To stay up to date with information from school please visit our The Globe Primary Academy, Facebook Page and Instagram Page.

Find more information on our website
www.theglobeprimary.co.uk

A member of the school team is always happy to help you.

Mrs Piccolo and Mrs Rice, our admin team, look forward to hearing from you.

You can contact us via the number or email.

If you require any information that is related to Special Educational Needs, please contact our SENCo - Miss Steventon on the school number or email send@theglobeprimary.co.uk